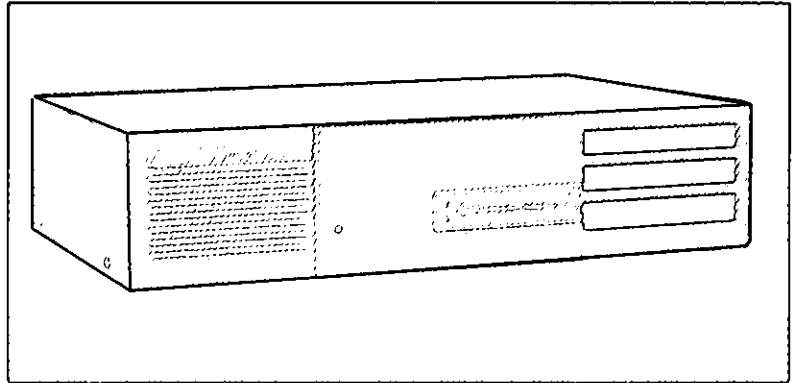


MICOM MARATHON[®] 3K

Integration Multiplexer

The Marathon 3K is one of a full family of industry-leading Integration Multiplexers offering cost-effective solutions for small to enterprise-sized networks.



Built-in Voice/Fax and Legacy Data Integration

Features

- Integrates legacy data with LAN and voice/fax traffic over a common private leased line, ISDN, or public frame relay link for substantial cost savings
- Locally-attached frame relay devices can transparently pass traffic to the public frame relay network, protecting your capital equipment investment
- Two built-in voice/fax channels
- New 8 Kbps ClearVoice™ technology for telephone conversations with toll quality while consuming minimal bandwidth
- Flash memory simplifies network upgrades
- A primary link can be established based on time-of-day configurations for economic remote access
- Modular 3-slot design provides for optional Integrated Router Module, voice/fax and legacy data expansion
- Synchronous channel speeds up to 64 Kbps for superior performance in SNA/SDLC networks
- Asynchronous port switching and contention allow remote users to share resources
- Supports PC-based NETMan™ network management system
- Three-year hardware warranty

O v e r v i e w

The Marathon 3K combines built-in voice/fax and legacy data integration with optional LAN integration and routing capabilities for convenient branch-office internetworking. An economic three-slot modular design allows for an additional voice/fax module, legacy data expansion or an Integration Router Module.

Marathon 3K utilizes either private leased lines or public frame relay services for cost-effective internetworking. [™]MicroBand ATM cell relay allows optimal throughput for integrated traffic over private leased lines. A MicroBand ATM port can be configured for wide-area link backup.

For public frame relay access, the Marathon 3K allows integrated communications traffic to travel over a common PVC to its destination. Multiple frame relay links can be configured to segment traffic for access to multiple public frame relay carriers. The Marathon 3K also allows locally-attached frame relay devices, including those that support RFC 1490 encapsulation, token ring and SNA applications, to transparently pass traffic to the public frame relay network.

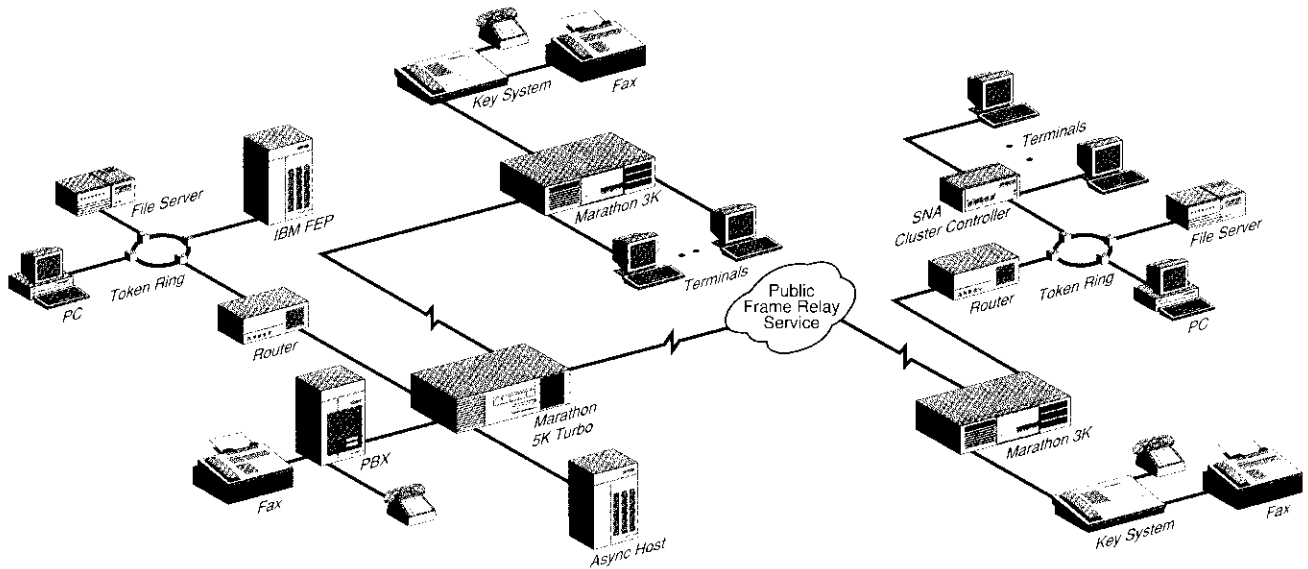
The Marathon 3K supports ClearVoice technology on its built-in voice ports, based on the International Telecommunications Union's (ITU) G.729 standard for wide-area voice compression. A new, more powerful digital signal processor and advanced algorithm provide toll quality voice at 8 Kbps compression rates. Silence suppression and other bandwidth efficiencies reduce the average consumed bandwidth by more than half.

The Marathon 3K handles virtually all legacy data protocols, including DEC VT100, H-P ENQ/ACK and SNA/SDLC. For LAN traffic, an optional Integration Router Module provides robust LAN routing capabilities. High-speed legacy data and LAN compression provide optimal bandwidth efficiency.

**The Marathon 3K
provides built-in
integration of voice/fax
communications with LAN
and legacy traffic over
public frame relay or private
leased lines.**

Specifications

Marathon 3K in a Hybrid Network that Combines MicroBand ATM, Private Leased Lines and Public Frame Relay Links



COMPOSITE WAN LINKS

Primary (Port A1)

Female, DB-25, strap-selectable as RS232, X.21, or V.35; configured as DCE; serial synchronous; internal/external clocking

Secondary Backup Link (Port A2)

Female, DB-25 RS232; configured as DCE; serial synchronous; internal/external clocking

MICROBAND ATM LEASED LINE ACCESS

1 Link supporting access rates from 2400 bps to 128 Kbps

FRAME RELAY ACCESS (Port A1 and A2)

2 Physical Links configurable up to 48 PVCs*
Access Rates: 56 Kbps to 1.536 Mbps (T1)
Maximum Sustained Throughput: 384 Kbps

VOICE/FAX CHANNELS

Base Unit with 2 built-in Voice/Fax Channels
Supports CEPT L1 (AC15) and RON/TRON

Interfaces Supported on Base Unit:

E&M 2 & 4 wire, I, II, IV, V, FXS, FXO

Voice/Fax Expansion Models Supported:

TUVM, VM and UVM

Maximum Voice/Fax Channels Supported: 4

DATA CHANNELS

Female, DB-25; full-duplex; configured as DCE

Maximum Async Data Channels: 26

Maximum Sync Data Channels: 2 (Ports A2 and A3)

Data Expansion Models Supported:

5000E/6, 5000E/12, 5000E/12LD

Data Rates:

Async: Up to 38.4 Kbps

Sync: Up to 64 Kbps*

Flow Control: EIA (RTS/CTS, DTR/DSR); XON/XOFF; HP ENQ/ACK; Tandem; Wang and Data General

Protocols Supported:

Most standard async and sync protocols

INTEGRATION ROUTER MODULE (IRM) OPTION

Ethernet IP/IPX routing and transparent bridging

CODE DOWNLOAD

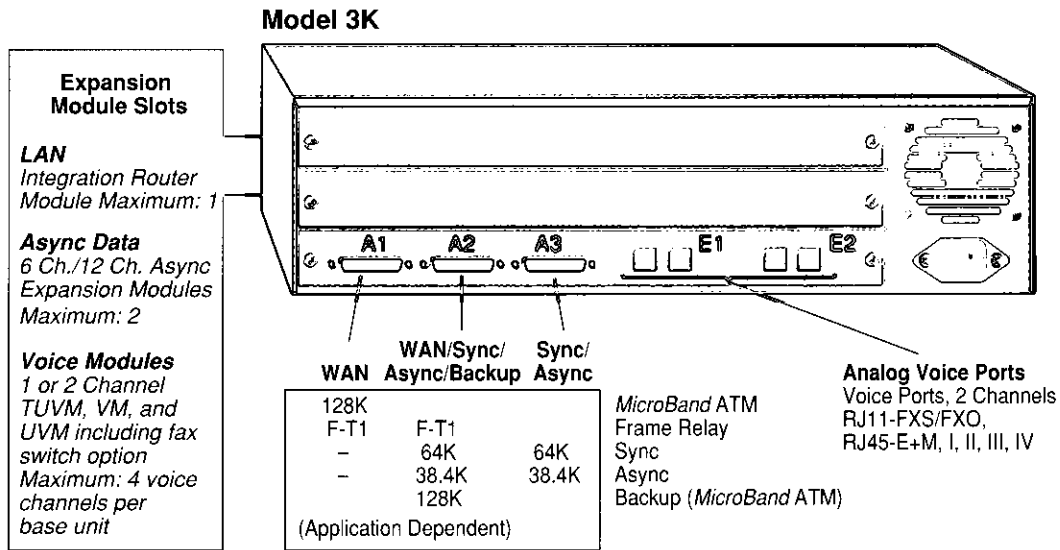
Single-Bank Flash memory supplied with base system;
Dual-Bank Flash available as an upgrade with realtime clock (5003M/RTC, SIMM module)

COMPATIBLE MICOM PRODUCTS

All MICOM Marathon products; link compatible with MICOM NetRunner® and STADIA™ products

* Application dependent

Specifications



DIAGNOSTICS

Startup, Local/Remote Channel Loopbacks,
Local/Remote Composite Loopbacks

MANAGEMENT OPTIONS

MICOM's PC-based NETMan network management system; a local/remote terminal; using IRM option and an SNMP-based console (public domain, MIB II, monitor mode)

PHYSICAL DIMENSIONS

Width 17.4 inches (44.2 cm)
Height 4.4 inches (11.2 cm)
Depth 11.8 inches (30 cm)
Weight 13 lbs (5.9 kg)

POWER REQUIREMENTS

100-240 Vac -5%, +10%, 1-2 amps;
47 to 63 Hz, 88 watts maximum

OPERATING ENVIRONMENT

Temperature:
32° to 122° F (0 to 50° C) operating
-40° to +158° F (-40 to +70° C) storage

Humidity:

10 to 90% relative humidity (noncondensing) operating
0 to 95% relative humidity (noncondensing) storage

AGENCY COMPLIANCE

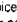
FCC Part 15 Level A, FCC Part 68,
C.R.C., c. 1374
EN55022 (CISPR 22 Level B)
EN50082-1:1992 (contact MICOM for
IEC801/EN55024 compliances)
UL 1950:1993
CSA Standard C22.2 No. 950:1993
IEC 950:1991+A1:1992
TUV: EN60950:1992, EN41003:1993,
BABT/BS-340
EU Declarations of Conformity



MICOM Communications Corp.

4100 Los Angeles Avenue
Simi Valley, California 93063-3397
Tel: (805) 583-8600
Fax: (805) 583-1997

Internet Web page: <http://www.micom.com>
E-mail address: info@micom.com
24-Hour FAXBACK System: (805) 582-7478

MICOM, Marathon, NetRunner, MicroBand ATM, EasyRouter, NETMan, ClearVoice and  are registered trademarks of MICOM Communications Corp. All other names or trademarks are true property of their respective companies.

Specifications subject to change without notice.
©1996 MICOM Communications Corp. All rights reserved.

For more information or the location of the MICOM Certified Distributor closest to you, call our Applications Hotline.

In the United States call:

Tel: 800-642-6687 • Fax: (800) 343-0329

In Europe call:

Tel: 44 (0) 1252 781 777 • Fax: 44 (0) 1252 781 717

In Asia-Pacific Rim call:

Tel: 65 334 6557 • Fax: 65 334 5845

In Latin America call:

Tel: (813) 538-7719 • Fax: (813) 539-1425